

JUNE 2023

CONTINUING EDUCATION 2023 SUMMER EDITION



Brighter Days

Welcome back Amanda Jackson!

It is with great excitement that I have taken up a post again within NIMDTA as Lead for Simulation and Continuing Education. As the April to June 2023 calendar comes to an end I would like to take this opportunity to thank you for your continued support. I look forward to working with the Dental Team and yourselves to promote professional development and the use of our Simulation Suite.

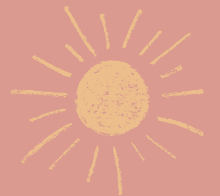
As the nights are brighter and longer, take a few minutes to sit down in the sunshine and have a read through our newsletter.



CONTINUING EDUCATION (CE) CHANGES



A warm welcome is extended to our new Dental Executive Officer, Sonia McMurray, who recently joined the Dental CE Team full time having worked in the Dental Department at NIMDTA for the last three years.



SIMULATION SUITE



Our Simulation Suite is now fully up and running and the Simodont trainers have been put to good use. Look out for future hands-on CPD opportunities in NIMDTA's CE calendar to enhance your skills and use this state-of-the-art equipment for hands-on learning. So far the Simodonts have been beneficial to GDPs returning to work and those who have attended a Clinical Skills Refresher course will be able to book a drop-in session which will be available on the last Thursday of each month from September. We are also delighted to be welcoming local and overseas dental undergraduates to NIMDTA's Simulation Suite to learn through this exciting new technology.

Are you an Educator?

Teaching Opportunities within the
CE Programme



Are you interested in
upskilling the dental team?

Send a CV to

dentalcourses.nimdt@hscni.net



Four Day Hands On Oral Surgery Course with a One Day Session for Your Dental Nurse

We are excited to re-run this Hands On course in our Autumn/Winter programme. Delivered by Dr Kashif Hafeez this level one course will be taught over four days. There will be a dental nurse session which will incorporate suture removal. Spaces are limited so we would encourage early booking when the calendar is released.

If you are interested and require further information please contact us at dentalcourses.nimmdta@hscni.net



Beginning Autumn 2023

Four Day Hands On Oral Surgery Course



We are delighted to be running once again our popular Practice Management Programme with Cath Marker-Evans.

This is a comprehensive course to enable existing and aspiring Practice Managers to effectively fulfil the role required with the skills and resources necessary to maximise performance.

If you are interested and require further information please contact us at dentalcourses.nimmdta@hscni.net



Practice Management Programme 2023

Beginning October 2023

Sustainable Dentistry

The practice of healthcare contributes significantly to the international carbon footprint and the collapse in biological diversity, both of which undermine human health. Dentistry contributes through the products we buy, the waste we produce, and the way patients access our services.

Sustainable dentistry delivers high quality care without damaging the environment, is affordable now and in the future and delivers positive social impact.

Are you thinking about sustainable dentistry and how your NHS practice can meet the net zero commitments. Would you like more information or to be part of a regional group?

Scan the QR code on your phone or click on the link below and let us know how your thoughts.



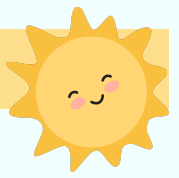
<https://forms.office.com/e/jcY7x5Ca2T>

Are you a registered Dental Nurse who undertakes additional duties, or would like to upskill?

The NEBDN post qualifications are for you!



There are seven post qualifications, and hopefully one that will interest you. NIMDTA are currently in the process of attaining NEBDN accreditation for both the Certificate in Dental Sedation Nursing and Special Care Dental Nursing, with more to come! Please keep an eye on our social media accounts and emailed flyers for more information.



Northern Ireland is beavering away with lots of dental research.

The Choice trail, is a really exciting clinical research trail involving 40 NHS dental practices, 10 of which are in Northern Ireland. Dental nurses deliver family focused therapeutic conversations within primary care for children with one or more decayed teeth but not needing extractions. We want to see if we can reduce the number of children getting new decay and needing tooth extractions.

Root canal or minimally invasive treatment for irreversible pulpitis? REFORM is a randomised controlled trial in General practices across Northern Ireland comparing the effectiveness of complete pulpotomy with root canal treatment for managing symptomatic irreversible pulpitis in mature permanent teeth.

We will compare patient experience of pain in the immediate post-operative period and the clinical and radiographic success of both treatments at 12 months. We will also explore the facilitators and barriers to the wider implementation of pulpotomy in mature teeth within the GDS and finally investigate if the genes and proteins expressed in pulpitis can be used to guide dentists with decision-making.

Interested? Contact s.cushley@qub.ac.uk



GDC

GDC Consultations

Your opinion matters!

Consultations and responses (gdc-uk.org)

Why not have your say on the following GDC consultation
- Updating the GDC's guidance on indemnity and insurance for registrants, open until 20th June 2023
Annual renewal period for Dental Care Professionals opens 12th June 2023

We would love to hear your feedback with regards to courses that we offer here at NIMDTA and what we can improve on. Please complete our short questionnaire below and let us know your thoughts.

<https://forms.office.com/e/aQ5Dwr1PFd>

NIMDTA CPD course review



Mindset Uk Survey

You are invited to complete a survey that will aid the development of resources to support the mental health and well being of Dental teams.

[HTTPS://WWW.SDPBRN.ORG.UK/CURRENT-PROJECTS/MENTAL-HEALTH-IN-DENTAL-SETTINGS-U-K-PROJECT-MINDSET-U-K/](https://www.sdpbrn.org.uk/current-projects/mental-health-in-dental-settings-u-k-project-mindset-u-k/)



A problem shared is a problem halved, contact for confidential support:



0800 389 5362



0808 808 8000



Have a great summer from the Continuing Education Team at NIMDTA

