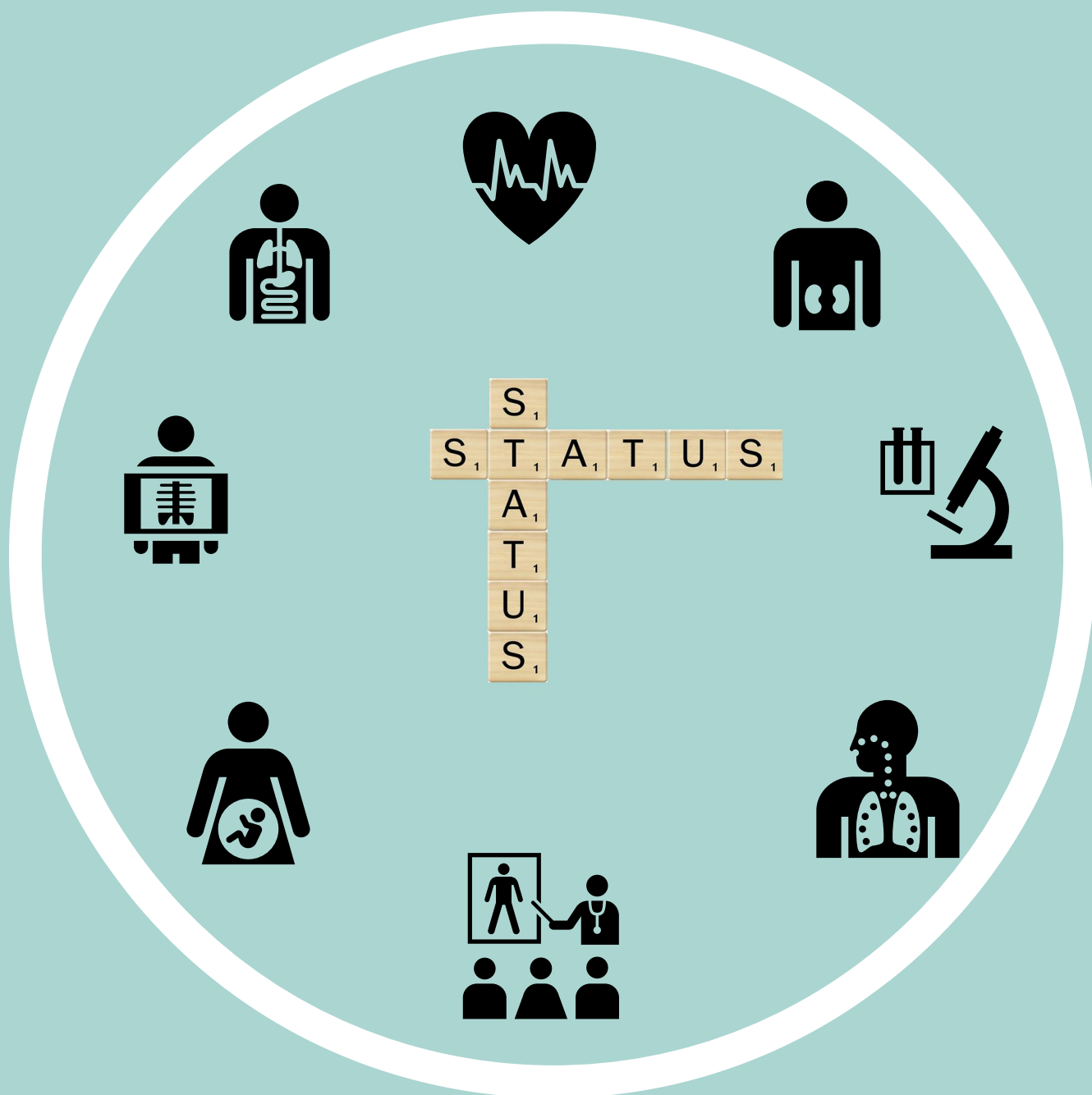


Time to Train

Giving Trainers STATUS



Selection <> Training <> Appraisal <> Transfer of data <>
Underperformance <> Support

From July 2016 the GMC has required all those in a named Clinical or Educational Supervisor role to be trained and recognised for their educational role.

Since 2016 NIMDTA has secured top up funding to support postgraduate medical education within HSC Trusts/ Local Education Providers - TIME to TRAIN INITIATIVE. This funding is managed locally within the Trusts/LEPs.

The funding secured, in addition to the funding already in the system, now facilitates 1 hour or 0.25 PA of educational time per trainee per week and is divided equally between the named Clinical Supervisor (CS) and Educational Supervisor (ES) roles.

The PA allocation should be identifiable in job plans of trainers in a CS or ES role and is equal to half an hour per role per trainee per week.

A formula for calculating the PA allocation is below:

Number trainees x 0.5 per role x 0.25= PA allocation

Eg 2 trainees x CS x 0.25 PA= 0.25 PA or 1hour per week

Eg 5 trainees x ES x 0.25PA= 0.625 PA or 2.5 hours per week

Joint roles-

2 trainees ES x 0.25 PA= 0.25PA or 1 hour per week

2 trainees CS x 0.25PA = 0.25PA or 1 hour per week

Total PA allocation for both roles = 0.5 PA or 2 hours per week

For further information regarding PA allocations please contact the following person within your own Trust:

Belfast HSCT- Katherine Moore: katherine.moore@belfasttrust.hscni.net

Western HSCT - Alison Warke (Alt): alison.heath@westerntrust.hscni.net

Christine McGovern (SWAH): christine.mcgovern@westerntrust.hscni.net

Southern HSCT- Kelly Wylie: Kelly.Wylie@southerntrust.hscni.net

South Eastern HSCT- Bob Magill: bob.magill@setrust.hscni.net

Northern HSCT - Gail Kernohan: Gail.Kernohan@northerntrust.hscni.net

For information on Foundation PA allocations please contact:

foundation.nimdta@hscni.net

